



# ORIGINAL INSTRUCTIONS

Model: iXP1

Commercial beverage cooler designed to be built into an enclosure.  
For either indoor or outdoor use.



Designed for use in high ambient temperature tropical conditions as well as winter use in cold temperatures.

Thank you for choosing this Blastcool appliance. It is essential that you read these instructions carefully and keep the booklet in a safe place for your future reference. The booklet contains mandatory safety information as well as essential maintenance routines. Failure to observe the instructions is unsafe and may also invalidate the warranty.



Caution! Risk of Fire



## **WARNING!**

Refrigeration and electrical repairs must only be carried out by suitably qualified and competent persons.

## TABLE OF CONTENTS

<b>1.0</b>	<b>General Safety Information.....</b>	<b>1-2</b>
<b>2.0</b>	<b>Unpacking and positioning the appliance prior to connection to the power supply.....</b>	<b>2-4</b>
<b>3.0</b>	<b>How to reverse the direction of the door hinge.....</b>	<b>4-5</b>
<b>4.0</b>	<b>Instructions for use of the door opening limiter pin accessory.....</b>	<b>5</b>
<b>5.0</b>	<b>Instructions for building-in.....</b>	<b>6</b>
5.1	Appliance enclosure minimum dimensions	
5.2	Fixing the anti-tilt foot	
5.3	Fixing the front of the appliance to the surrounding furniture	
5.4	Minimum ventilation requirements for the structure for building-in	
5.5	Connection to the electrical supply	
<b>6.0</b>	<b>Operation of the appliance.....</b>	<b>11</b>
6.1	Defrosting	
6.2	Adjustment of the temperature	
6.3	Lighting	
6.4	Eco Button	
6.5	Loading the Appliance	
<b>7.0</b>	<b>User Maintenance.....</b>	<b>12</b>
7.1	Lighting	
7.2	Cleaning	
<b>8.0</b>	<b>In the event of a malfunction.....</b>	<b>14</b>
<b>9.0</b>	<b>Disposal and recycling at end-of-life.....</b>	<b>14</b>
<b>10.0</b>	<b>Winterising and what to do when the cabinet is not in use.....</b>	<b>14-15</b>
<b>11.0</b>	<b>Contacts.....</b>	<b>15</b>

## 1.0 General Safety Information

Please observe the following safety WARNINGS and instructions contained within this booklet at all times.

This appliance has been designed and tested as a Commercial Beverage Cooler for building-in to an enclosure. The appliance should not be used for other purposes.

The maximum environmental conditions for which the cabinet has been rated are defined in ISO22044: 2022 as CC3 (40.6°C ambient temperature and 75%, Relative Humidity, RH) and also in IEC60335-2-89 as ISO Climate Class 5 (40°C ambient temperature and 40% RH). In practical use the design limits are a maximum ambient temperature of 43°C and a minimum ambient temperature of -25°C. These design limits are only valid if the installation and ventilation requirements described later in the booklet have been met.

This appliance is rated for outdoor use at IP24 conditions. The Ingress Protection (IP) rating is defined in the European and British Standard BS EN 60529:1992. The appliance is safe to use in conditions where it may be subjected to “splashing water” from any direction. In practical terms, it is protected from rain. It is not, however, protected from jetting water such as from a hose pipe or pressure washer, nor can any part of it be immersed in water, for example if it were to be subjected to partial flooding during heavy rain. Caution must also be exercised when jet washing any surrounding stonework or paving in the outdoor area.

This appliance must only be connected to a suitably IP-rated outdoor power supply that has been installed by a qualified electrician. It is the user's responsibility to ensure that the power socket is fully compliant with the electrical safety code that is relevant for the country of installation. A Residual Current Device (RCD) must be present within the connection circuit that supplies this appliance.

Always disconnect the mains power supply, prior to the removal of any covers, the performance of maintenance tasks, the aesthetic cleaning of the appliance or the making of any repairs.

This appliance can be used by children aged from 8 years and above and persons with reduced physical, sensory or mental capabilities or lack of experience and knowledge if they have been given supervision or instruction concerning use of the appliance in a safe way and understand the hazards involved. Children shall not play with the appliance. Cleaning and user maintenance shall not be made by children in any circumstances.

Do not cover or obstruct the front grille. Lack of proper ventilation could cause a fire. You must ensure that no leaves, litter or other foreign objects can accumulate or otherwise cause obstruction.

Do not probe any of the openings in the appliance and be careful not to touch any moving parts such as the fans, nor hot surfaces in the compressor compartment such as the compressor or pipework. Take care when touching the cold surfaces such as the interior metalwork.

Do not overload the power supply. Always ensure that the power supply is compatible with the requirements stipulated on the rating plate. The rating plate is located on the interior

right-hand sidewall of the appliance. If in any doubt, you must consult a qualified electrician.

Never use adaptors or multi-block extensions leads to connect the appliance to the mains power.

The mains power supply cord and plug top must be examined for damage such as cracks, cuts or splits, prior to connection to the mains power supply. If any damage is found, they must be replaced using a Blastcool authorised service agent or a qualified electrician.

**WARNING:** Keep clear of obstruction all ventilation openings in the appliance enclosure.

**WARNING:** Do not store explosive substances such as aerosol cans with a flammable propellant in this appliance.

**WARNING:** Do not use any electrical appliances inside the refrigerated compartment of this appliance.

**WARNING:** Do not use mechanical devices or other means to accelerate the defrosting process. Defrosting is performed automatically by the electronic controller.

**WARNING:** Do not damage the refrigeration circuit. If you do so, then immediately open a window or door (providing that there is no source of ignition present in the adjacent space) to ventilate the area. The appliance contains flammable refrigerant and there is risk of fire.

**WARNING:** This appliance contains flammable refrigerant within its sealed system and also within the insulation foam. It is mandatory that when the cabinet reaches end-of-life that it be disposed of by a professional recycling organization. It must not be thrown away as general waste.

This appliance uses LED lighting. The lighting strips and transformer should only be replaced using genuine Blastcool parts of the same technical specification.

Do not exceed the maximum shelf loading weight of 15kg per shelf.

The appliance must not be moved or tilted whilst connected to the mains power.

The appliance must always be earthed.

The appliance must only be charged with R600a refrigerant sourced from a licensed supplier.

Electrical equipment should not be placed under the unit or where refrigerant could gather in the event of a leak.

## **2.0 Unpacking and positioning the appliance prior to connection to the power supply**

Please equip yourself with suitable Personal Protective Equipment (PPE) such as work gloves, eye protection, strong shoes with toe protection, and a high-visibility jacket such

that you may be seen by others. Please note that the weight of the appliance may require you to be assisted by others or take suitable precautions.

During all operations please take care not to jolt, jar or bump the appliance. It must be handled gently and with care. The refrigeration pipework is delicate and may be damaged by rough handling.

If the appliance has been delivered in a non-upright position then it must be left to stand for 24 hours prior to connection to the power supply.

Please cut the banding straps that secure the outer packaging and remove the cardboard sleeve, corner protection strips and the plastic bag. Set to one side the box containing the Grille Insert accessory. Carefully lift the appliance off the base and place it gently on the floor. Caution! Be sure not to put the appliance down on top of the power cable or plug top. Please ensure that the packaging is recycled and pay particular attention to the hazard presented by the plastic bag such that it cannot be taken by children. Do not connect to the power supply without having checked the power cable and plug top as mandated in the preceding section.

Opening the door of the appliance, the shelves are found to be secured in transit with cable ties. The cable ties can be snipped and removed.

The shelves may be adjusted by moving the clips that are shown in Figure 1 below. To release the clip, simply squeeze together whilst moving in an upward direction. When re-installing the clip, please make sure it is securely located in the support ladder-rack. Always ensure that the shelves are installed level and without tilting.

**Caution:** Do not exceed the maximum shelf loading weight of 15 kg per shelf.

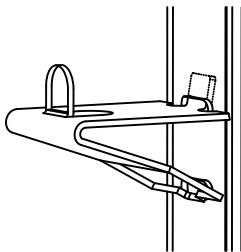


Figure 1: Shelf clip adjustment

Do not place the appliance next to a source of heat or humidity. If this is the required arrangement, then suitable compartmentalization must be arranged such that the heat from one appliance does not cross-contaminate the cool requirements of the other.

Do not place the appliance in direct sunlight. The location should be shaded.

Do not place the appliance near to a source of static electricity or where it may be vulnerable to lightning strike.

The place of location must be well ventilated and free from sources of ignition. In particular it must not be located where the refrigerant could gather in the event of a leakage from its sealed system. An example to avoid would be if the appliance were to be positioned below ground level, such as in a cellar.

Please ensure the appliance is placed on a level surface of sufficient strength to support the weight of the unit when it is filled to capacity. The levelling feet must be adjusted such that the appliance is perfectly level. This is necessary for correct operation of the door and the drainage system.

### 3.0 How to reverse the direction of the door hinge

The door of the appliance may be reversed such that the hinges are on the left of the cabinet, rather than on the right. See figure 2 below.

Step 1: Open the door of the appliance

Step 2: Detach the door from the hinges

Step 3: Remove the plastic screw covers from the hinges

Step 4: Detach the hinges from the body of the appliance

Step 5: Unfasten the blanking screws from the left-hand side of the appliance

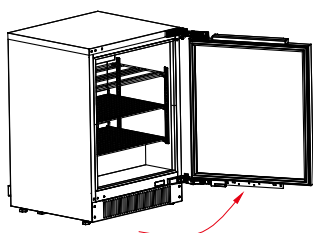
Step 6: Re-attach the bottom hinge (as was) to top of the appliance complete with spacer

Step 7: Re-attach the top hinge (as was) to bottom of the appliance complete with spacer

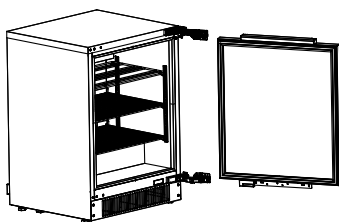
Step 8: Re-fit the screw cap covers to the hinges

Step 9: Re-attach the door to the hinges

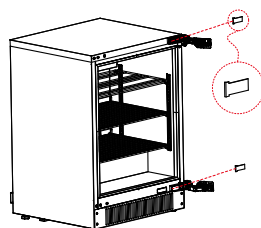
Step 10: Close the door and test for level fitting and accurate closure.



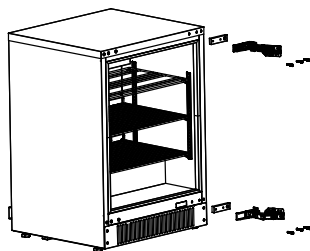
Step 1



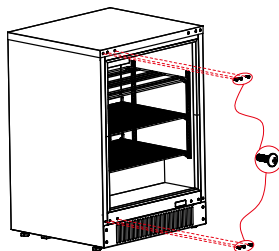
Step 2



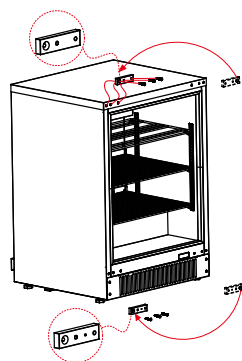
Step 3



Step 4



Step 5



Step 6

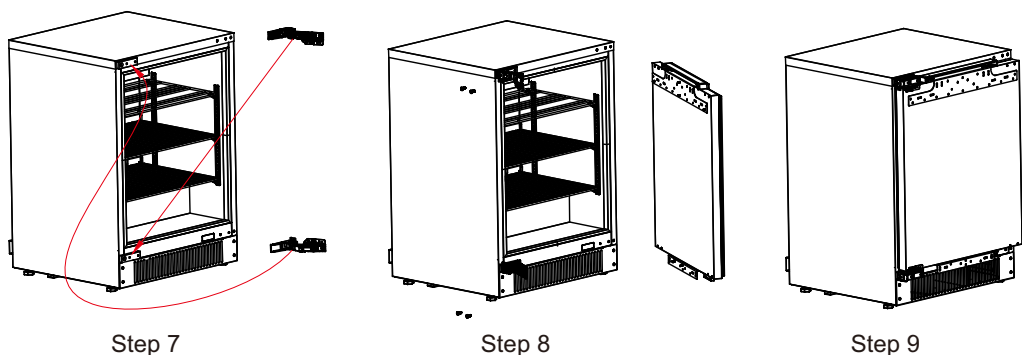


Figure 2: Identification of parts related to the reversal of the door hinge direction

#### 4.0 Instructions for use of the door opening limiter pin accessory

As standard, the door opens to 115° but if the location demands it, a 90° limiter pin is supplied in the Accessory bag located inside the refrigerator. The limiter pin may be inserted as shown in Figure 3 below.

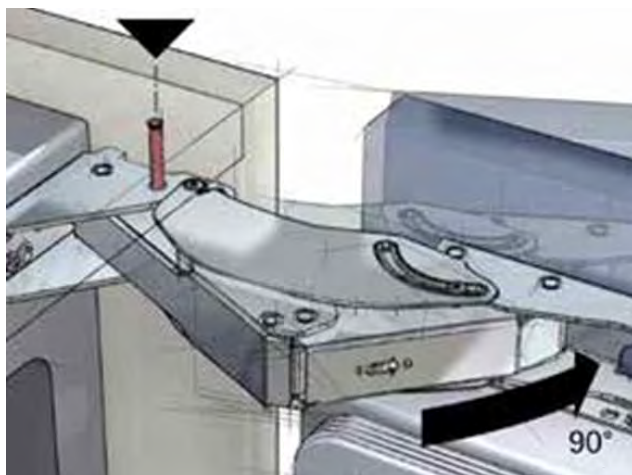


Figure 3: Insertion of Limiter pin accessory if required.

## 5.0 Instructions for building-in

### 5.1 Appliance enclosure minimum dimensions

The appliance enclosure must meet minimum dimensions shown in Figure 4 below.

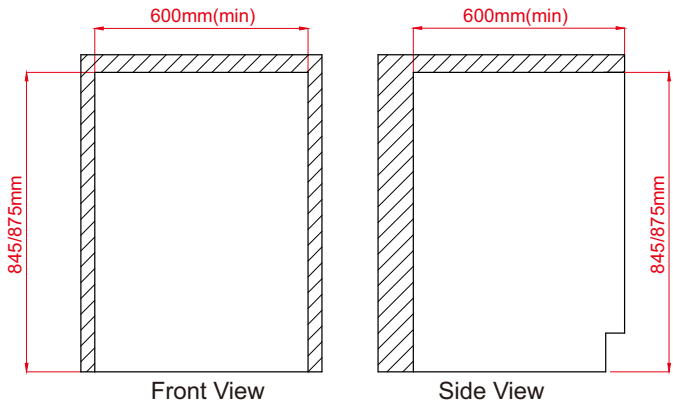


Figure 4: Minimum dimensions of the structure for building-in

### 5.2 Fixing the anti-tilt foot

The appliance must be anchored at the rear. Please identify the anti-tilt foot at the rear of the appliance. Locate the anchoring bracket accessory supplied in bag inside the appliance. Fix the anchoring bracket to the floor such that it aligns and will engage securely with the anti-tilt foot on the appliance. Adjust the anti-tilt foot as required by turning it either clockwise or anti-clockwise until the required position is achieved. When the cabinet is located in its final position, it must securely engage with the bracket and the anti-tilt foot. Only use stainless steel fasteners to prevent corrosion. See Figure 5 below.

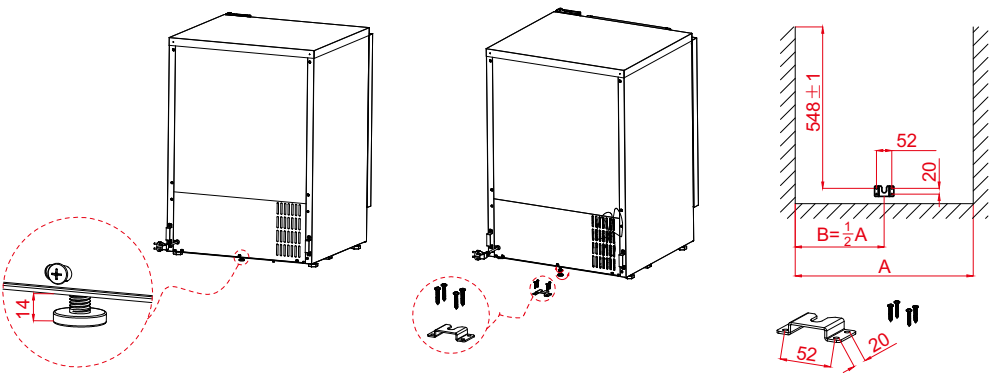


Figure 5: Fixing the anti-tilt foot bracket.



**5.3 Fixing the front of the appliance to the surrounding furniture**

The appliance must be securely fastened to the surrounding furniture. Fastening brackets are included in the accessory bag located inside the appliance. The appliance must also be secured to the adjacent cabinetry wall at the hinge side of the appliance using the apertures in the hinges. Only use stainless steel fasteners to prevent corrosion. See Figure 6 below.

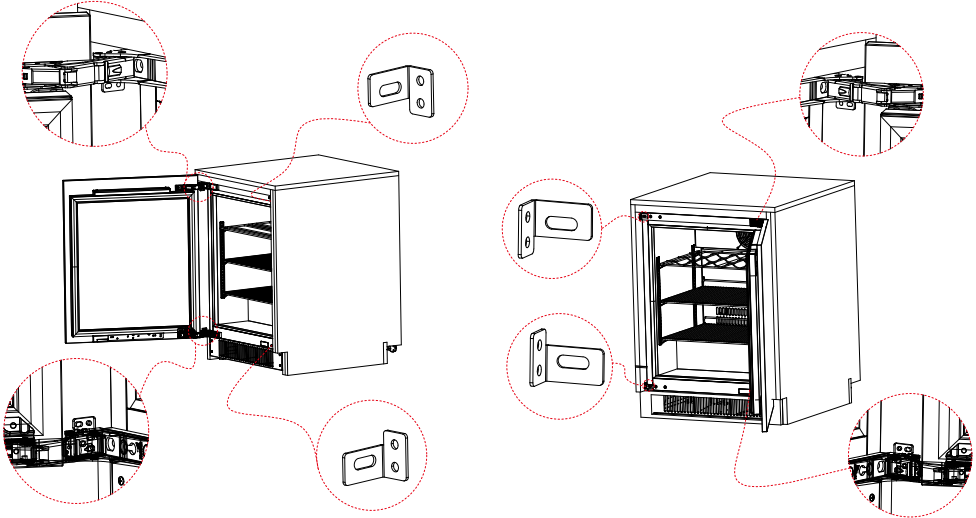


Figure 6: Securing the appliance to the surrounding furniture

**5.4 Minimum ventilation requirements for the structure for building-in**

Ventilation at the front of the appliance is mandatory. Ventilation at the rear is optional but desirable.

**5.4.1 Ventilation at the front – Mandatory**

The appliance comes fitted with a front ventilation grille that is fastened in position with screws.

If the installation allows for the front grille to be visible, then it must be left fully exposed such that the full extent of the front grille is unobstructed and open to the air. See Figure 7 below.

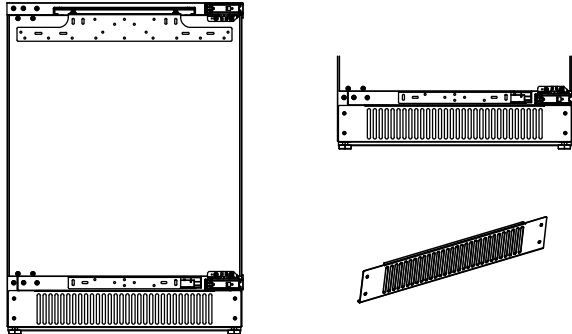


Figure 7: The front ventilation grille

If the installation requires a continuous skirting board (also sometimes known as a 'toe plate / board' or 'kick plate / board'), then the supplied Grille Insert accessory can be used instead of the front ventilation grille that comes fitted to the cabinet as standard. The two grilles must never be used together at the same time. The installation must be made with either of one or the other but never use the two together. You must use the grille supplied because it is designed to deliver the correct air volume to the appliance. You must keep the Grille Insert free from obstruction. Only use stainless steel fasteners to prevent corrosion. See Figures 8 and 9 below.

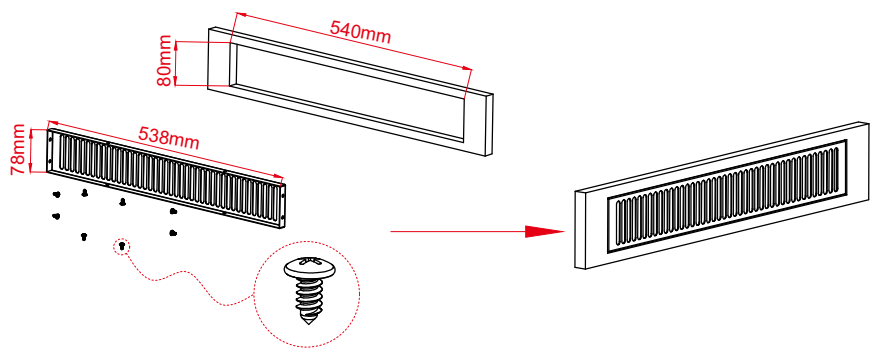


Figure 8: Fastening the Grille Insert accessory to the skirting board

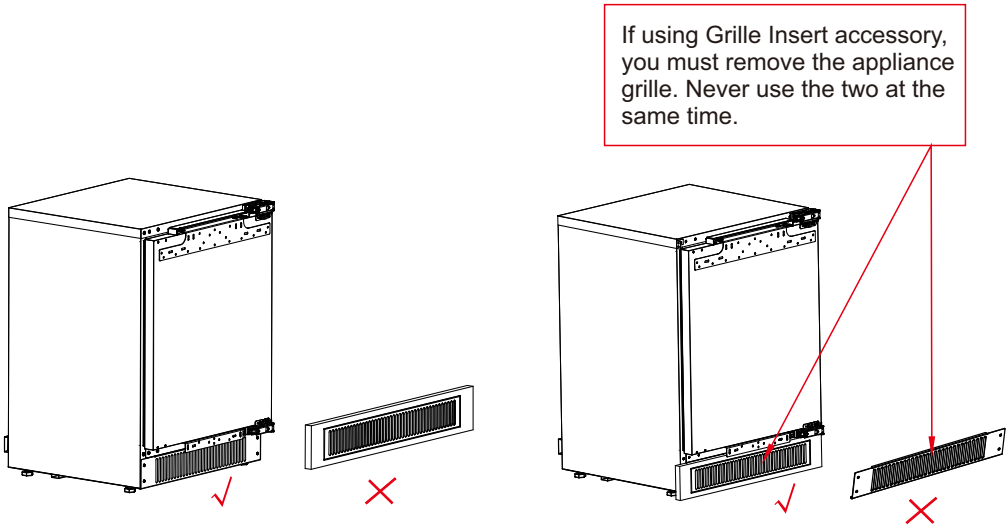


Figure 9: Do not use two grilles at the same time. If using the Grille Insert accessory then you must remove the standard appliance front grille.

The Grille Insert accessory, and the appliance intake / exhaust area must be in perfect alignment to ensure free flow of air. If this is not done correctly the warranty will be invalidated. There is also a risk of fire if the cabinet will overheat due to improper ventilation.  
See Figure 10 below.

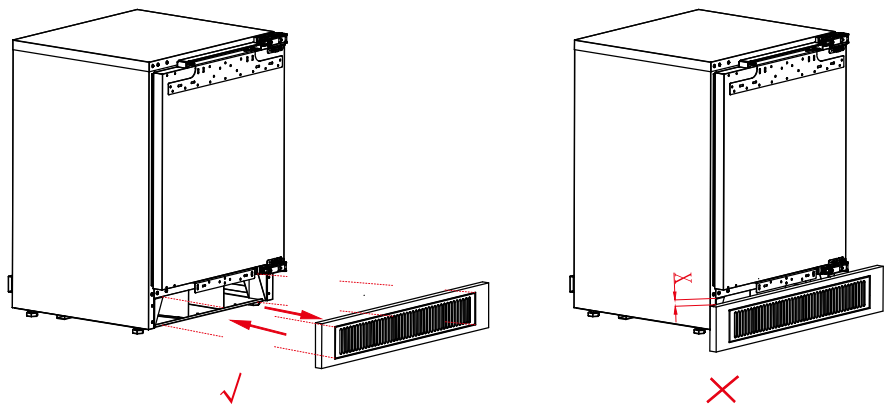


Figure 10: The Grille Insert accessory and the appliance intake must be in proper alignment

**CAUTION!** When using an installation that makes use of the Grille Insert accessory, care must be taken to ensure that there is no gap left between the rear of the skirting board and the front of the appliance body. The user should not be able to probe or otherwise gain access to the air intake / exhaust of the appliance. See Figure 11 below.

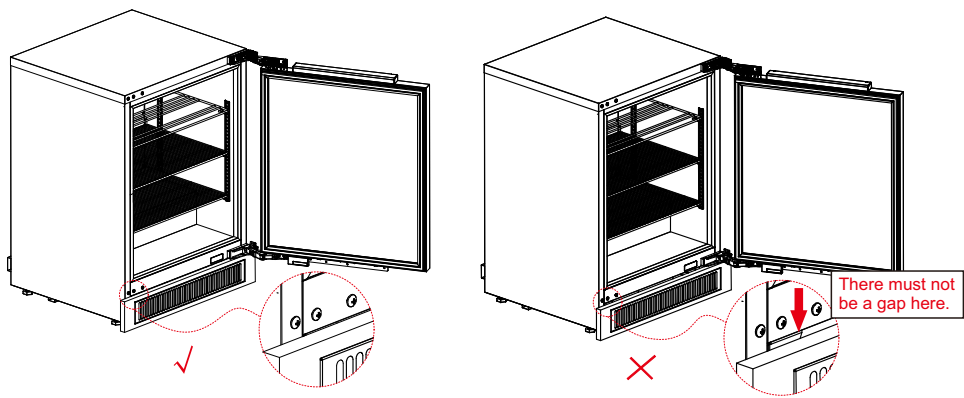


Figure 11: Ensure no access to the air intake or exhaust area from the top of the skirting board then you must remove the standard appliance front grille.

**5.4.2 Optional: Ventilation at the rear of the appliance.**

Ventilation at the rear is desirable but not mandatory. If there is the possibility to provide cool air ingress at the rear, it will benefit the long-term running of the appliance. See Figure 12 below.

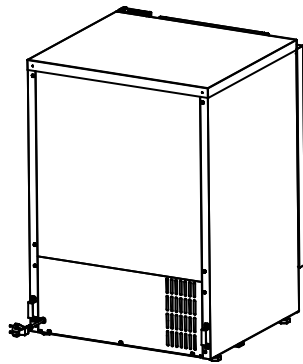


Figure 12: Location of ventilation intake at the rear of the appliance

**5.4.3 Fitting of the décor panel to the door of the appliance**

A décor panel may be fitted to the door of the appliance using the included 3-D adjustment brackets. See Figure 13 below. The décor panel must not obstruct the ventilation grille. To fit the décor panel, first remove the 3-D adjustment top and bottom brackets. Securely fasten both brackets to the décor panel using stainless steel screws. Re-fit and adjust as required. You must fit the fastening brackets and screws as described in 5.3.

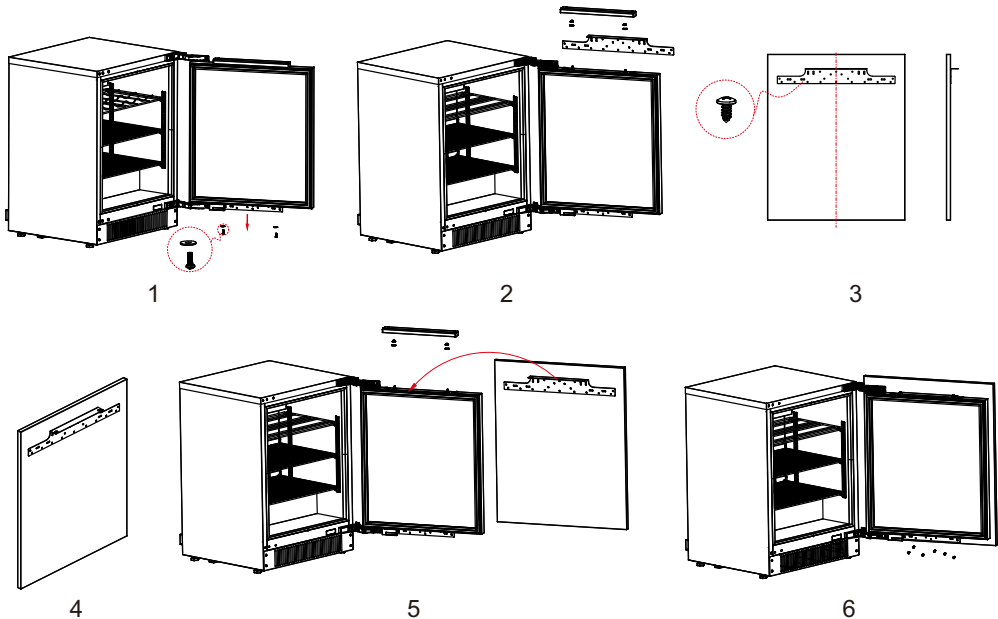


Figure 13: Identification of the décor panel 3-D adjustment brackets and fastening screws.

#### 5.4.4 Maximum allowable weight and dimensions of the décor panel

The appliance can accept a décor panel that falls within the parameters below.

Maximum weight of décor panel complete with handle:	20 kg
Maximum thickness of décor panel, excluding handle:	19mm
Maximum width of décor panel:	635 mm

#### 5.5 Connection to the electrical supply

The appliance must be connected to a suitably outdoor IP rated power supply. The power supply must be compatible with the electrical information shown on the rating plate of the appliance which is located on the interior, right-hand sidewall. There must be a Residual Current Device (RCD) in the circuit that is directly connected to the appliance. The use of adaptors, extension leads or multi-blocks is prohibited. There must be a power switch that is easily accessible and visible to the user whilst they are performing any maintenance tasks. If it is not possible to have it visible and accessible during maintenance, then the power switch must be capable of being locked off. A professionally qualified electrician should be used to ensure the safety and suitability of the installation.

#### 6.0 Operation of the appliance



**1 Press:** temperature set point  
**Sub function:** "up"

**1 Press:** temperature set point  
**Sub function:** "down"

#### 6.1 Defrosting

Defrosting is done automatically. The condensate water is evaporated by the refrigeration system. No user intervention is required.

#### 6.2 Adjustment of the temperature

The appliance is supplied with a pre-set temperature known as the Set Point. The current air temperature inside the appliance is displayed on the fascia of the electronic controller which is located on the top right-hand side of the interior rear wall. Please note that the displayed value represents the internal air temperature, and it will rise when the door is opened and it will also cycle up and down in normal use. In normal operation, the temperature of the contents will reach the Set Point temperature.

To access the Set Point, simply make a short press (1 second) on either the up or down arrow on the fascia of the controller. The current value of the Set Point will be displayed. To adjust the Set Point simply make further short presses on either the up or down arrow as required. Once the desired value is displayed, leave the controller alone without any further button pressing. The new value will be stored and the display will revert to the current air temperature. Fresh food items are advised to be stored between 1-4°C.

#### 6.3 Lighting

The light switches on and off automatically when the door is opened and closed. The button on the controller displaying a Lamp symbol has been disabled.

## 6.4 Eco Button

The appliance is designed with energy efficient components. The Eco button shown on the fascia of the controller has been disabled and is not required on this appliance.

## 6.5 Loading the Appliance

To ensure maximum energy efficient usage and thermal control, please ensure that the air ventilation openings on the inside rear of the compartment are kept free from blockage by food items or bottles.

## 7.0 User Maintenance

Caution! Always disconnect the appliance from the power supply prior to commencement of any maintenance activity, whether performed by the user or a skilled professional.

### 7.1 Lighting

The appliance uses an LED lighting strip powered by a low voltage transformer. If replacement is required please order only genuine Blastcool replacement parts. A qualified electrician should be used to perform the replacement of either the LED strip or the transformer.

### 7.2 Cleaning

The appliance must be kept clean to maintain the validity of the warranty. The following regime is recommended:

Appliance Interior:	Weekly to maintain hygiene
Appliance Exterior:	In coastal conditions & locations with high concentrations of airborne salt spray, remove cabinet from enclosure for cleaning every three months, or more frequently as necessary to hold back corrosive attack. In normal conditions without salt spray, remove cabinet from enclosure once a year.
Appliance front grille:	The front grille must always be unobstructed and free from blockage. Remove leaves, snow, cobwebs, litter, dust, other objects.
Condenser:	In very dusty and windy conditions, clean condenser monthly. In normal conditions clean condenser once a year.
Door seal:	In normal use without spillages, the contact area of the door seal (gasket) should be cleaned weekly at the same time as the cabinet interior. Once a year, the seal should be removed for deep cleaning. Take care not to tear it.
Cleaning Materials:	Do not use cream cleansers as they will cause scratches to the stainless steel. Cleaning of the exterior, interior and door seal is best done with a cloth soaked in warm soapy water. Dry with kitchen paper towels immediately afterwards. Do not inundate with water under any circumstances. Commercially available glass window cleaning fluid is effective for removing finger marks from stainless steel. If using a proprietary stainless steel cleaning product, always be sure to follow the instructions that come with it. Do not use steam, jetting or running water to clean the appliance.

Cleaning the condenser: The condenser is located behind the compressor compartment cover at the rear of the appliance. The function of the condenser is to dissipate the heat that has been extracted from the interior of the appliance. It must be kept clean and free from dust. To clean the condenser, please perform the following procedure:

Step 1: Please equip yourself with appropriate Personal Protective Equipment (PPE) including, work gloves, eye protection, high-visibility jacket, toe protected footwear.

Step 2: Disconnect from the mains power supply.  
Remove the appliance from the enclosure.

Step 3: Locate the compressor compartment cover at the rear and remove by unfastening the screws. Set aside the screws for re-fastening later. Take care of potentially sharp metal edges. Items inside the compressor compartment will be hot and could cause injury. Allow these hot components to cool before commencement of maintenance.

Step 4: Identify the condenser and clean it using a soft brush. A smaller brush will also be needed to access the hard-to-reach areas. Take care not to damage or bend any of the items inside the compressor compartment. Do not use steam, jetting or running water. Do not use water or any other fluids. If the condenser is not possible to clean, then a commercial refrigeration professional must be employed to perform the task.



Step 5: Remove any debris using the nozzle of a vacuum cleaner



Step 6: A clean, as if new, condenser will look like the following example.



Step 7: If the cleaning has been performed to the required standard, the cover may be re-fastened using all of the screws set aside in step 3.

Step 8: Refit the appliance back into the enclosure and re-connect to the power supply.

## 8.0 In the event of a malfunction

If the appliance develops a fault, please turn off the power immediately. Take note of the serial number that is marked on the appliance on the interior right-hand sidewall (it is accompanied by a bar code) and contact the dealer from whom you purchased the cabinet. Failing that, please contact Blastcool. Only use a properly authorised engineer who is qualified to handle flammable refrigerants and always insist on the use of genuine spare parts. In the UK and EU, there is a limited 5-year warranty subject to the original terms and conditions of sale and geographical restrictions.

## 9.0 Disposal and recycling at end-of-life



**WARNING!** The appliance contains flammable refrigerant within its sealed system. The appliance also contains a flammable blowing agent within the insulation foam. The details are listed on the rating plate of the appliance which is located on the interior right-hand sidewall. As such it is classified as Hazardous Waste. The appliance must not be thrown away as general waste. It must only be recycled by a professional refrigeration recycling organisation. Please contact your Local Authority for details of how to recycle the appliance.

## 10.0 Winterising and what to do when the cabinet is not in use

The appliance is recommended to be left running all the year round.

During winter - It is recommended to empty the contents to avoid freezing. (There is no heating element inside the appliance). The appliance will not be damaged by leaving it outside during frost or sub-zero conditions as low as -25C.

During summer – It is recommended to leave the appliance running during the summer, even if not in use.



In winter or summer, if the appliance is to be left without power, it must be emptied and allowed to dry out. Wedge the door open until fully dry but then allow it to close normally. Do not leave the door permanently ajar. Take care not to deform the door seal.

Please ensure the appliance is fully cleaned and sanitised prior to returning it to service.

## **11.0 Contacts**

For further information or to obtain genuine spare parts please contact us below.

Blastcool  
C/O Staycold Export Ltd.  
Hawarden Business Park  
Hawarden  
Flintshire  
CH5 3US  
United Kingdom

Telephone UK: 01244 321320  
Tel. International: +44 1244 321320

Email: [sales@blastcool.com](mailto:sales@blastcool.com)  
[www.blastcool.com](http://www.blastcool.com)

Blastcool is a trademark of ESP Ventures Ltd. It is registered throughout the EU, UK and Australia.